



Capacity 25000 kg



- 17-4 PH STAINLESS STEEL
- COMBINED ERROR $\leq \pm 0.017\%$
- PROTECTION CLASS IP68
- LIGHTNING PROTECTION

CAPACITY	kg	ACCURACY CLASS				NET WEIGHT	CODE
		C4				OF LOAD CELL (kg)	
25000		•	•	•		2.4	CO25
			ON REQUEST				

CERTIFICATIONS



OIML R60 C4

CERTIFICATIONS ON REQUEST



ATEX II 1GD (zone 0-1-2-20-21-22)



IECEx (zone 0-1-2-20-21-22)

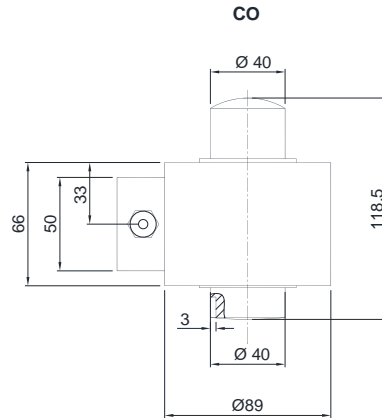
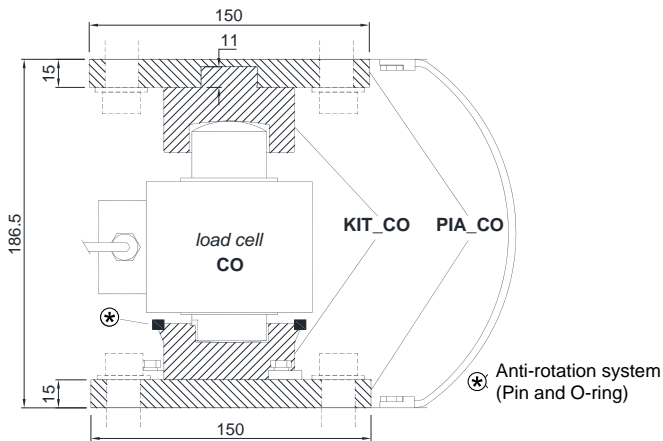


Complies with the Eurasian Custom Union regulations (Russia, Belarus, Kazakhstan)

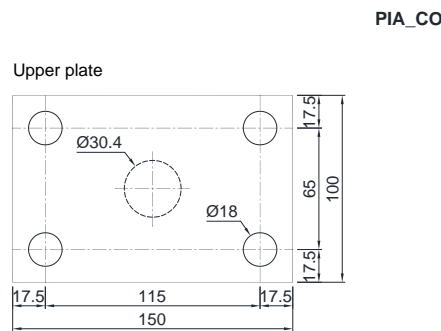
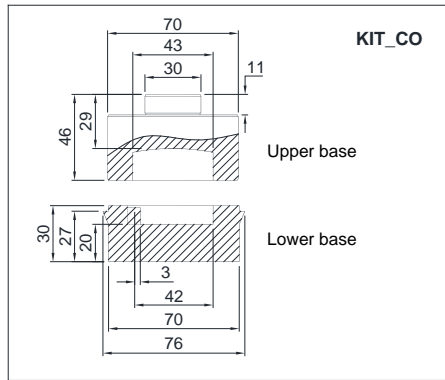
COMPLEMENTARY ACCESSORIES

	DESCRIPTION	CODE
	Kit composed by 2 stainless steel bases.	KIT_CO
	Kit composed by 2 special steel plates (upper and lower) for KIT_CO bases.	PIA_CO

DIMENSIONS (mm)



CO = 2.4 kg
KIT_CO = 1.8 kg
PIA_CO = 3.4 kg



TECHNICAL FEATURES

Material	17-4 PH stainless steel		
OIML R60 Accuracy class • Verification intervals	C4 • 4000		
Nominal load (E max)	25000 kg		
Minimum verification interval (V min)	E max / 15000		
Combined error	≤ ±0.017%		
Protection class	IP68		
Rated output	2 mV/V ±1%	Input resistance	700 Ω ±7
Temperature effect on zero	0.002% °C	Output resistance	700 Ω ±7
Temperature effect on span	0.002% °C	Zero balance	±1%
Compensated temperature range	-10 °C / +40 °C	Insulation resistance	≥5000 MΩ
Operating temperature range	-30 °C / +65 °C	Safe overload (% of full scale)	150%
Creep at nominal load in 30 minutes	0.02%	Ultimate overload (% of full scale)	300%
Max supply voltage without damage	18 V	Deflection at nominal load	0.6 - 1 mm

ELECTRICAL CONNECTIONS

Cable length	15 m
Cable diameter	5 mm
Cores	4 x 0.24 mm ²



The Company reserves the right to make changes to the technical data, drawings and images without notice.