

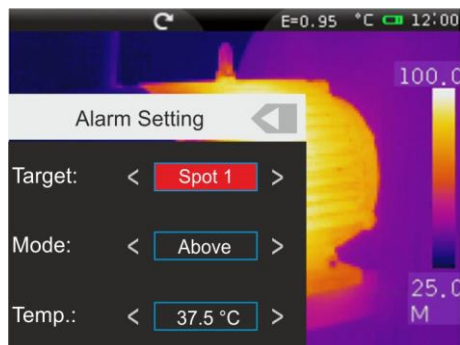
The **THT60** model is a professional infrared camera with capacitive touch-screen TFT color display for quick and intuitive advanced use by any kind of thermograph operator



General menu with icons



Screening function



Alarm setting for Screening function



Advanced analysis: Isotherm feature



**1. IMAGING PERFORMANCE**

Thermal	
Detector type	UFPA
Spectral range	8 ÷ 14µm
Resolution / Pxl size	160 x 120 pxl / 25µm
Thermal sensitivity	<0.08 °C @ 30°C
Field of View (FOV)	29.8° x 22.6° (7.5mm lens)
Minimum focal distance	0.2m
IFOV (@1m)	3.33mrad
Focusing	Manual on lens
Image frequency	50Hz
Color palettes	8 (Standard) + 10 (Customized)
Visible	
Integrated camera	CMOS sensor 640x480pxl, FOV 62.3°

2. IMAGING / IR VIDEO DISPLAY

Display type	3.5" TFT color, capacitive touch-screen, high brightness
Infra PiP Fusion	IR image inside visible & Visible image inside IR
IR Video	Recording and saving on micro SD card MPEG4 format
Video output	PAL / NTSC
Electronic zoom	x1 ÷ x20 in continuous way
Image rotation	0° ÷ 360° in step of 1°

3. TEMPERATURE MEASUREMENT

Range	Resolution	Accuracy (*)
-20°C ÷ 400.0°C	0.1°C	±2%rdg or ±2°C (higher value)
-4.0°F ÷ 752.0°F	0.1°F	±2%rdg or ±3.6°F (higher value)

(*) With standard lens. For optional lens the accuracy is ±4%reading or ±4°C choosing the higher value

4. TEMPERATURE MEASUREMENT SCREENING MODE

Range	Resolution	Accuracy
32.0°C ÷ 42.0°C	0.1°C	±0.5°C
89.6°F ÷ 107.6°F	0.1°F	±0.9°F

5. GENERAL SPECIFICATIONS

Measurement cursors	3 (selection temperature MIN, MAX, Customized position on image)
Laser pointer	Class 2 according with IEC 60825-1
Built-in illuminator	White light LED
Measurement modes	Automatic / Manual / Histogram
Emissivity correction	0.01 ÷ 1.00 + internal table with common materials
Measurement features	Automatic correction based on distance, relative humidity, atmospheric temperature, reflexed temperature, offset
Advanced analysis	Spots (max3), Lines (max 2), Areas (max 2), Isotherm
Alarm on temperature	Associated to measurements Spots
Temp. Compensation	only Screening mode
Operating temperature	-20°C ÷ 50°C
Operating humidity	10%RH ÷ 90%RH
Storage temperature	-40°C ÷ 70°C
Storage humidity	10%RH ÷ 90%RH
Encapsulation	IP65 according with IEC529
Shock	25G, according with IEC60068-2-29
Vibrations	2G, according with IEC60068-2-6
Drop test	2m
Dimensions (L x W x H)	243 x 103 x 160mm
Weight(battery included)	0.92kg



6. IMAGE STORAGE AND PC INTERFACE

Memory	Micro SD card 8GB
File format	JPEG standard
Memory size	> 2000 images
Voice annotation	60 s / image
Textual annotation	With internal virtual keyboard
PC interface	USB 2.0 (for video and image transfer)

7. POWER SUPPLY

Battery type	Rechargeable Li-ION, 7,4V 2700mAh
Charging system	In camera or in base charger
Battery life	4.5 hours of continuous use
External power	External adapter 100/240VAC (50/60Hz)/12VDC

**This instrument complies with Directive EMC 2014/35/EU
This instrument satisfies the requirements of European Directive 2011/65/EU (RoHS) and 2012/19/EU (WEEE)**